

OFFICE BUILDING FOR LEASE RIVERWALK CENTER I

1661 SHORELINE DRIVE • BOISE, IDAHO 83702



PROPERTY INFORMATION:

Submarket:	Downtown	Lease Term:	5 Years
Bldg Type:	Office	Lease Type:	FSEJ
Bldg Size:	15,279 SF	TI Allowance:	Negotiable
Parcel Size:	1.408 Acres		
Quality:	Class A		
# of Floors:	2		
Parking:	3.8/1,000 (Free)		

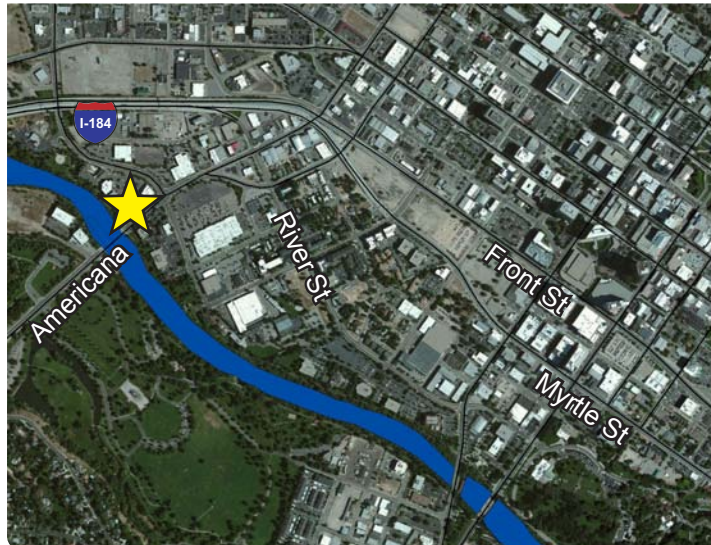
AVAILABLE SPACE:

SPACE:	RSF:	RATE:
2nd Floor	7,640 SF	\$19.75/SF, FSEJ

CONTACT:

Peter Oliver, SIOR, CCIM
Ph: 208.947.0816
peter@tokcommercial.com

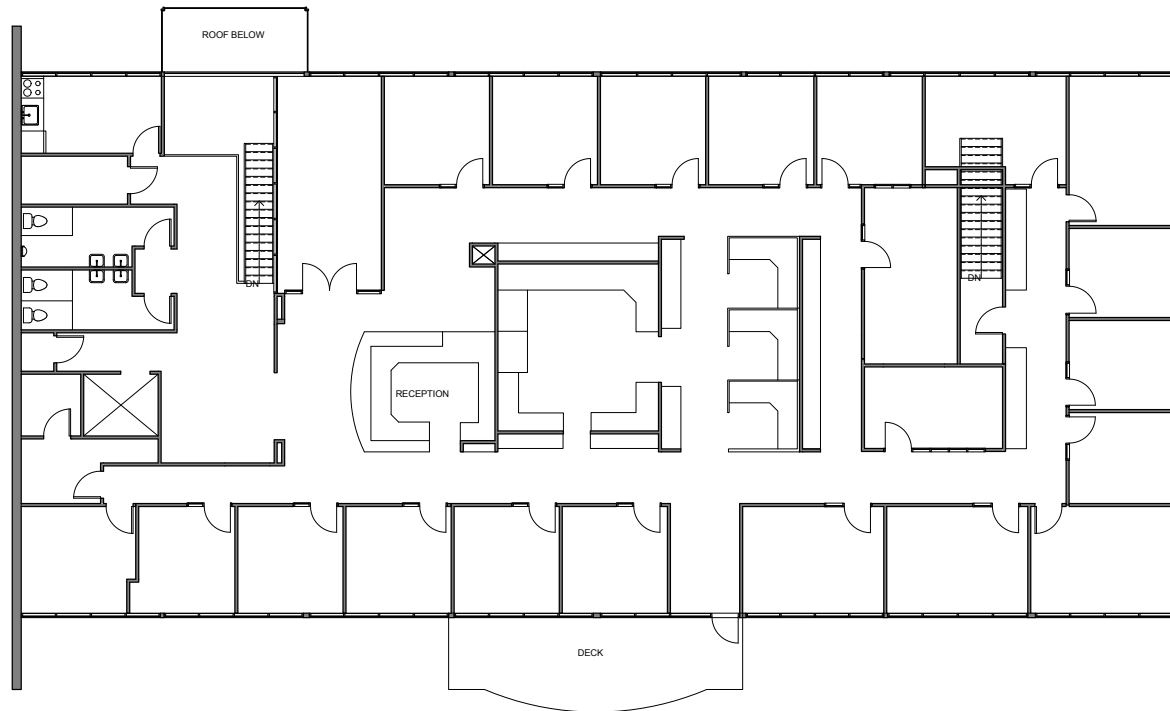
Mike Greene, SIOR, CCIM
Ph: 208.947.0835
mikeg@tokcommercial.com



LISTING COMMENTS:

- Easy I-184 Connector and Downtown Boise access.
- Ideally situated on the Boise River & Greenbelt.
- Beautiful river and foothills views.
- Professional office environment.
- Abundant mature landscaping.
- Building signage available.
- Fiber to building.

Floor Plan - 2nd Floor

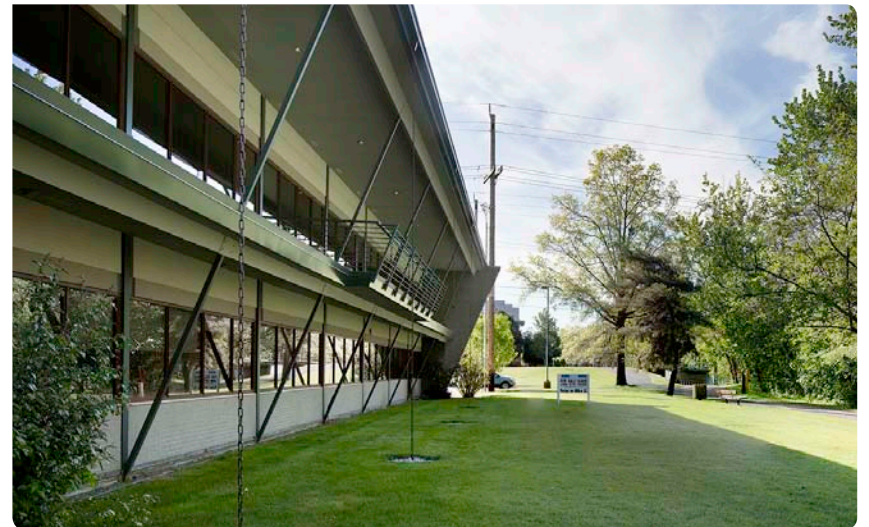


This information was obtained from sources believed reliable but cannot be guaranteed. Any opinions or estimates are used for example only.

OFFICE BUILDING FOR LEASE RIVERWALK CENTER I

1661 SHORELINE DRIVE • BOISE, IDAHO 83702

Photographs



This information was obtained from sources believed reliable but cannot be guaranteed. Any opinions or estimates are used for example only.

OFFICE BUILDING FOR LEASE RIVERWALK CENTER I

1661 SHORELINE DRIVE • BOISE, IDAHO 83702

Aerial Map



This information was obtained from sources believed reliable but cannot be guaranteed. Any opinions or estimates are used for example only.