

LAND FOR SALE / BUILD TO SUIT **MAGIC VIEW LAND**

2960 E ST. LUKE'S STREET • MERIDIAN, IDAHO 83642



PROPERTY INFORMATION:

Size: 1.527 Acres
Build to Suit: 15,628 SF (See page 3 for Conceptual Plan)
Utilities: To Site
Zoning: L-O

SALE SUMMARY:

Land Sales Price: Contact Broker

DEMOGRAPHICS:

2016	1 Mi.	3 Mi.	5 Mi.
Population:	2,435	79,195	206,879
Avg HH Income:	\$90,733	\$79,383	\$78,537
Daytime Pop:	7,801	43,575	92,973

CONTACT:

Jim Boyd
 Ph: 208.947.5522
 jim@tokcommercial.com



LISTING COMMENTS:

Utilities available

Close proximity to Eagle Road and I-84

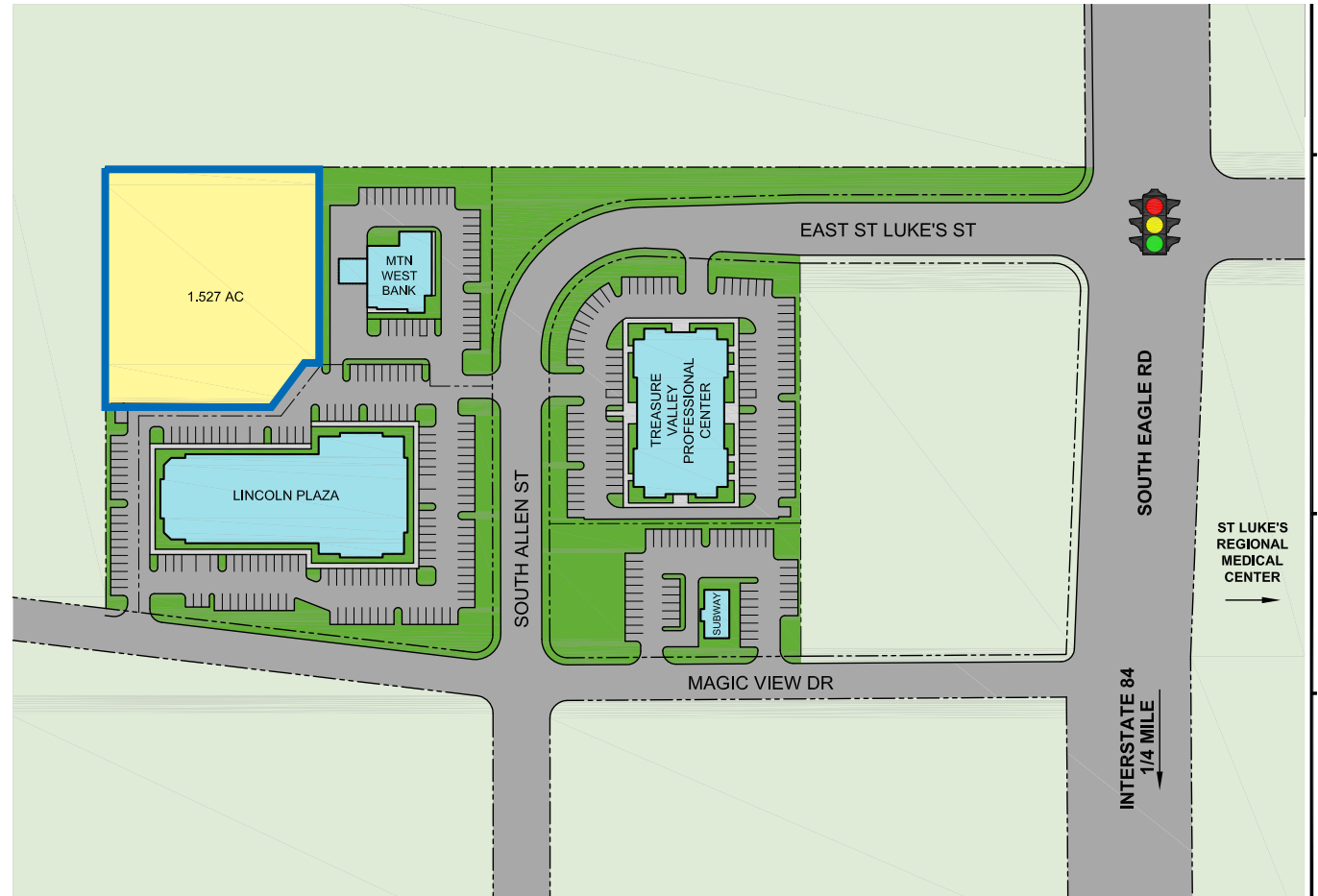
Located across the street from the St. Luke's Regional Medical Center

LAND FOR SALE / BUILD TO SUIT MAGIC VIEW LAND

2960 E ST. LUKE'S STREET • MERIDIAN, IDAHO 83642

SALE INFORMATION:

PARCEL:	ACRES:	PRICE:
Lot 1	1.527	Contact Agent

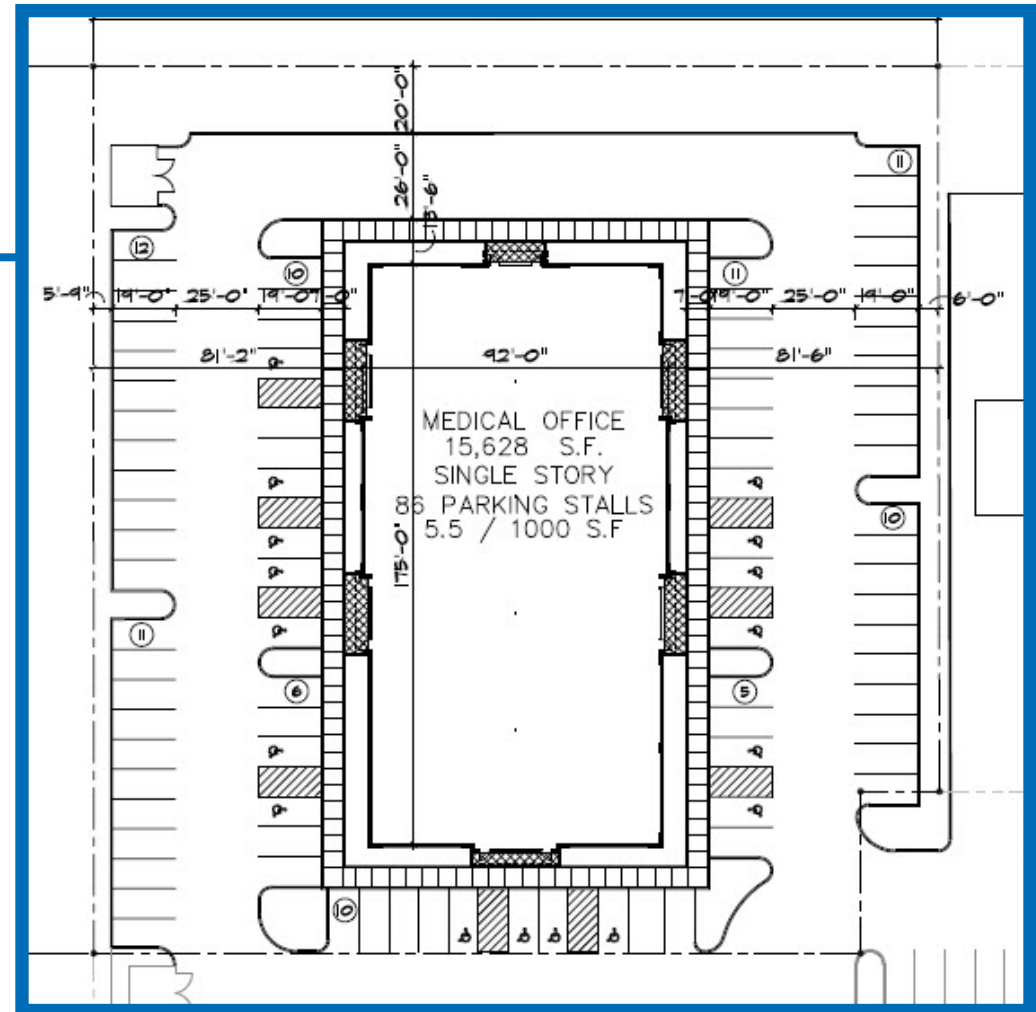
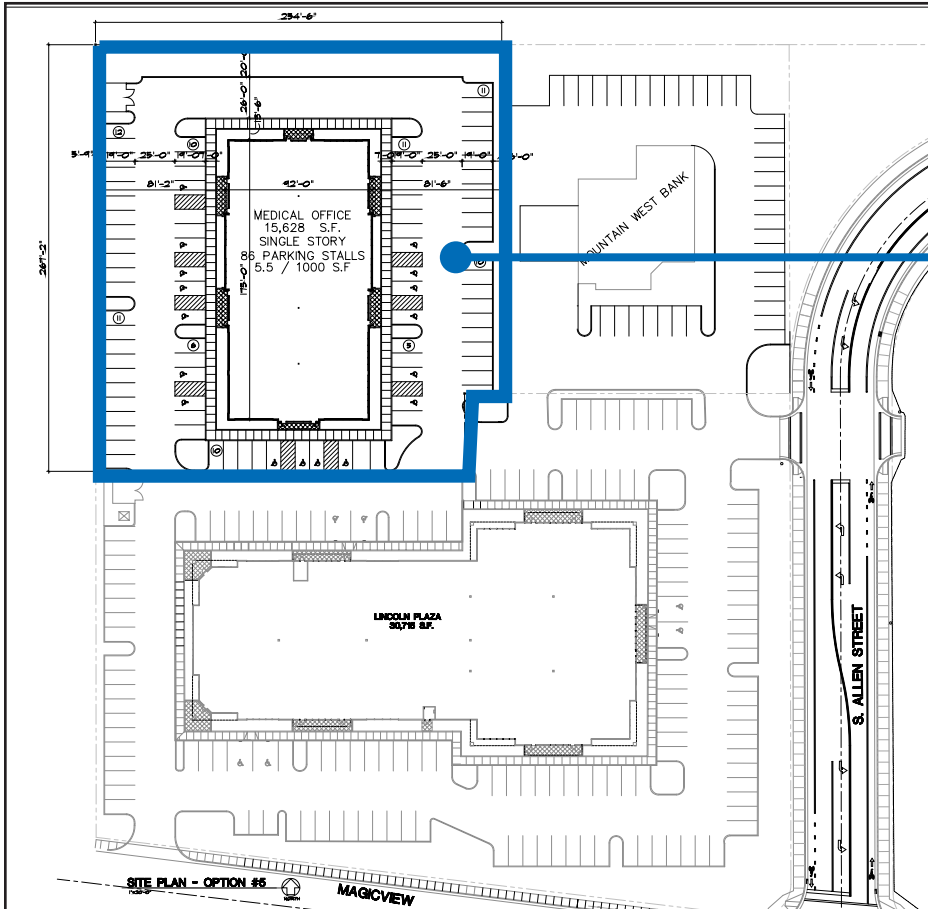


This information was obtained from sources believed reliable but cannot be guaranteed. Any opinions or estimates are used for example only.

LAND FOR SALE / BUILD TO SUIT MAGIC VIEW LAND

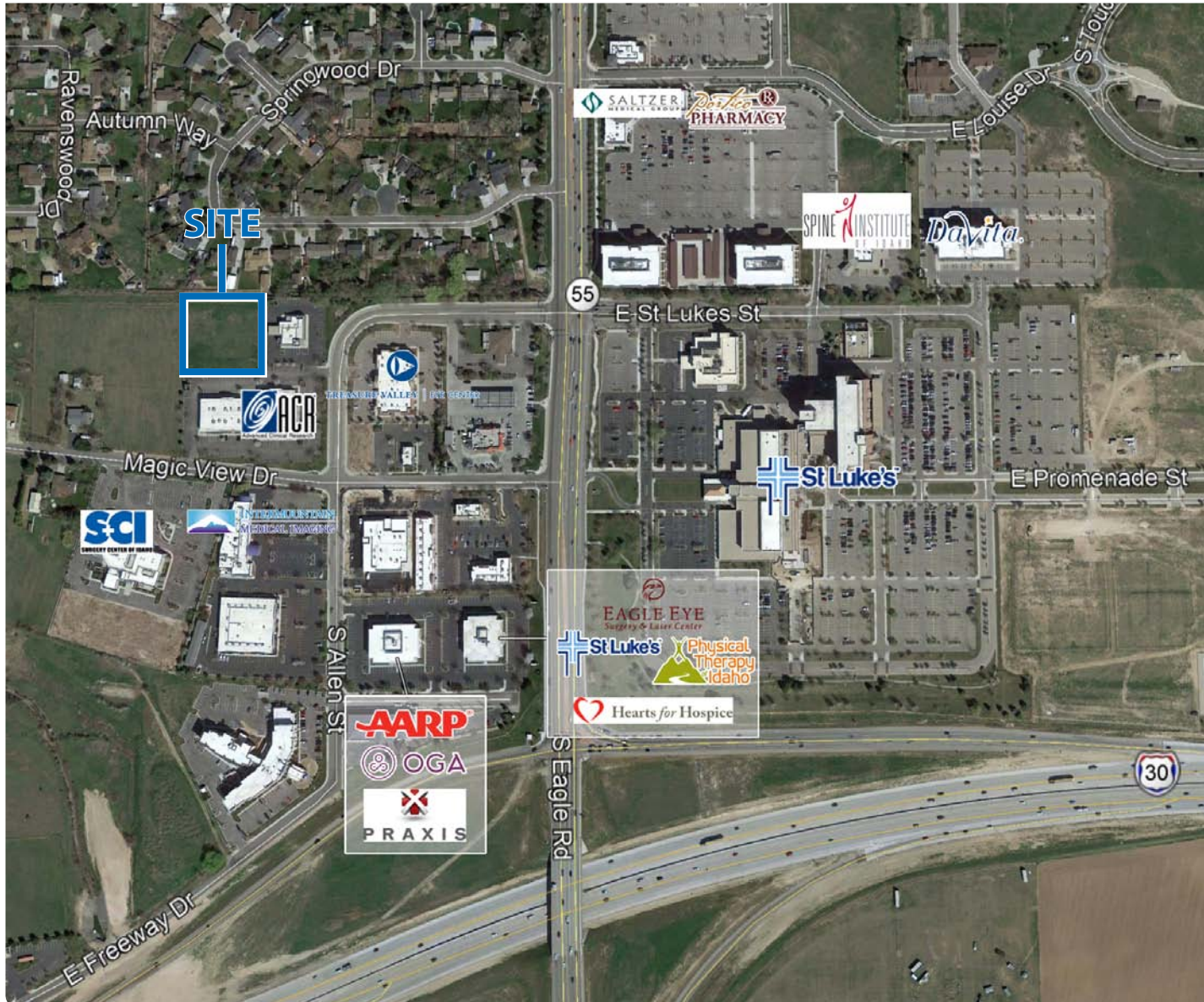
2960 E ST. LUKE'S STREET • MERIDIAN, IDAHO 83642

CONCEPTUAL SITE PLAN



LAND FOR SALE / BUILD TO SUIT **MAGIC VIEW LAND**

2960 E ST. LUKE'S STREET • MERIDIAN, IDAHO 83642



This information was obtained from sources believed reliable but cannot be guaranteed. Any opinions or estimates are used for example only.