

OFFICE SPACE FOR LEASE GREYSTONE BUILDING

250 Bobwhite Court | Boise, Idaho 83706



PROPERTY INFORMATION:

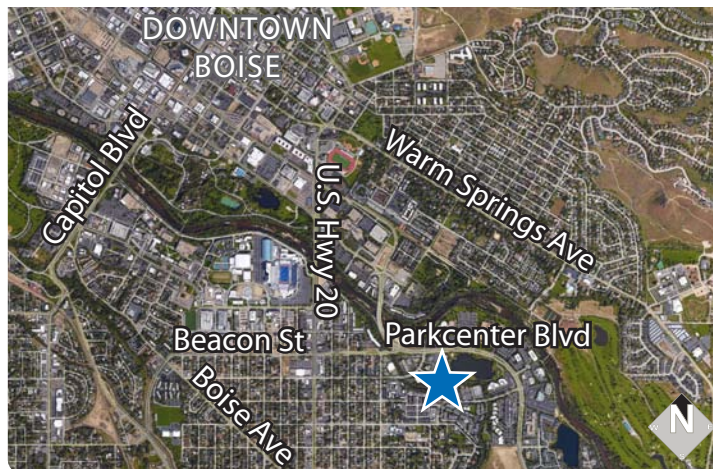
Submarket:	Southeast	Lease Terms:	3-5 years
Bldg Type:	Office	Lease Type:	FLSVEJ
Quality:	Class A	TI Allowance:	Negotiable
Bldg. Size:	33,378 SF	Available:	Immediately
Parking:	3:1,000		

AVAILABLE SPACE:

SPACE:	RSF	RATE
Suite 110	3,107 SF	\$17.50/RSF
Suite 220	1,112 SF	\$17.50/RSF
Suite 240	2,056 SF	\$17.50/RSF
Suite 350	2,490 SF	\$17.50/RSF

CONTACT:

Patrick Shalz, SIOR
Ph: 208.947.0834
pat@tokcommercial.com



LISTING COMMENTS:

Beautiful surroundings on Parkcenter Park and Lake.

Quick access to Downtown Boise.

Conveniently located close to restaurants, shopping, banks, and Albertsons Headquarters.

Functional floor plans ready for occupancy.

Free on-site parking.

Building renovated in 2012 including 50 MB fiber to building.

OFFICE SPACE FOR LEASE GREYSTONE BUILDING

250 Bobwhite Court | Boise, Idaho 83706

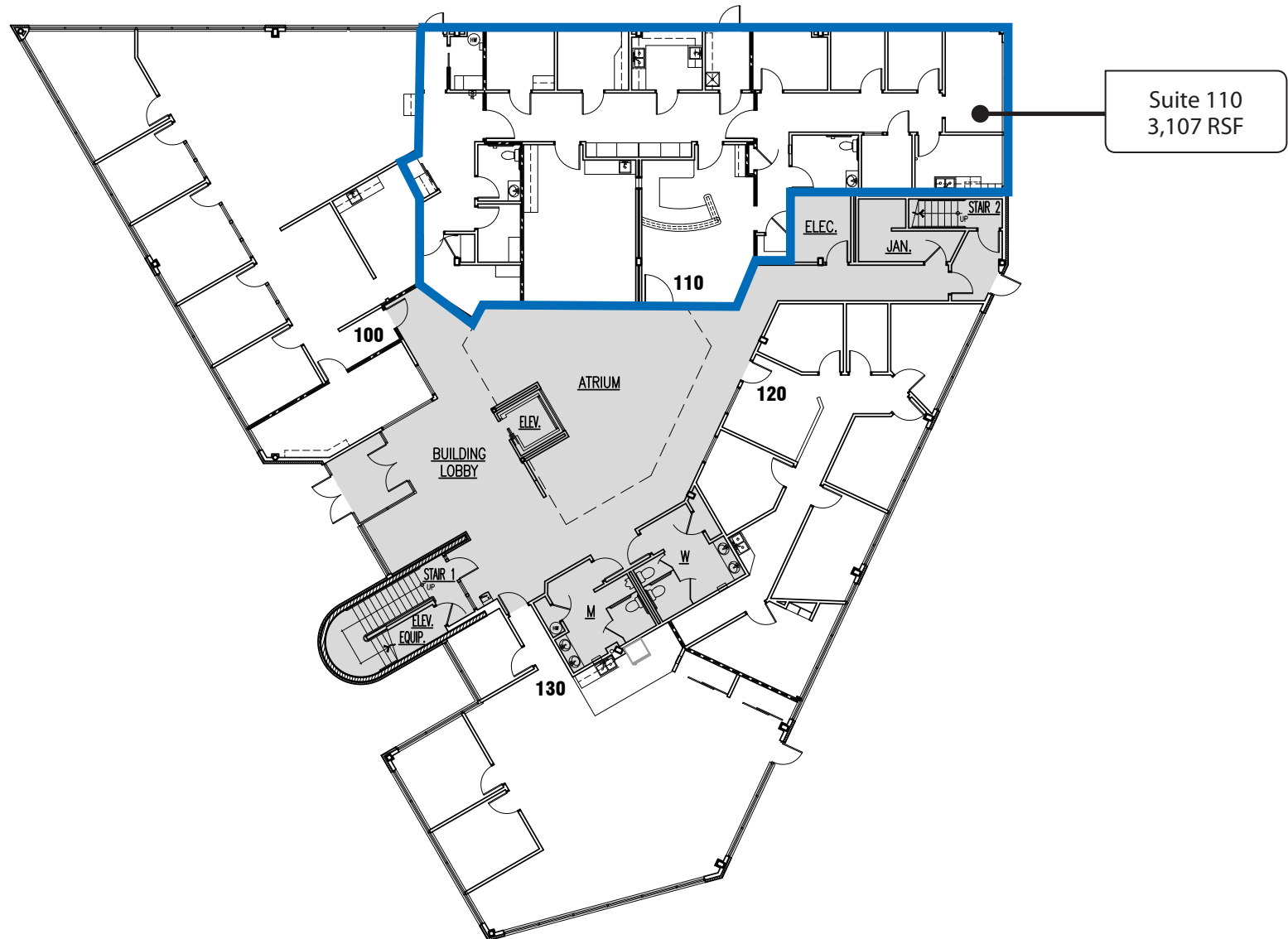


This information was obtained from sources believed reliable but cannot be guaranteed. Any opinions or estimates are used for example only.

OFFICE SPACE FOR LEASE GREYSTONE BUILDING

250 Bobwhite Court | Boise, Idaho 83706

FIRST FLOOR

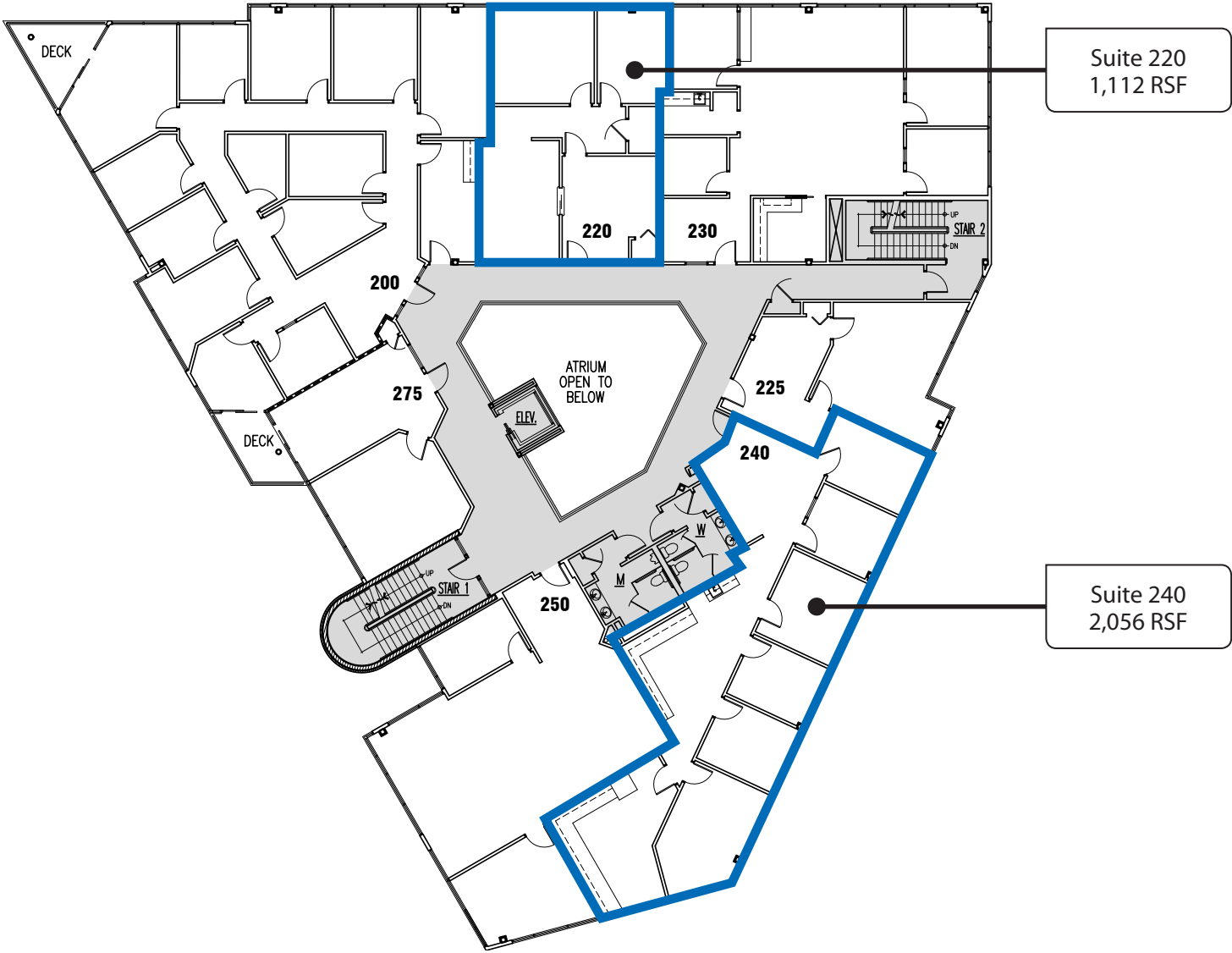


This information was obtained from sources believed reliable but cannot be guaranteed. Any opinions or estimates are used for example only.

OFFICE SPACE FOR LEASE GREYSTONE BUILDING

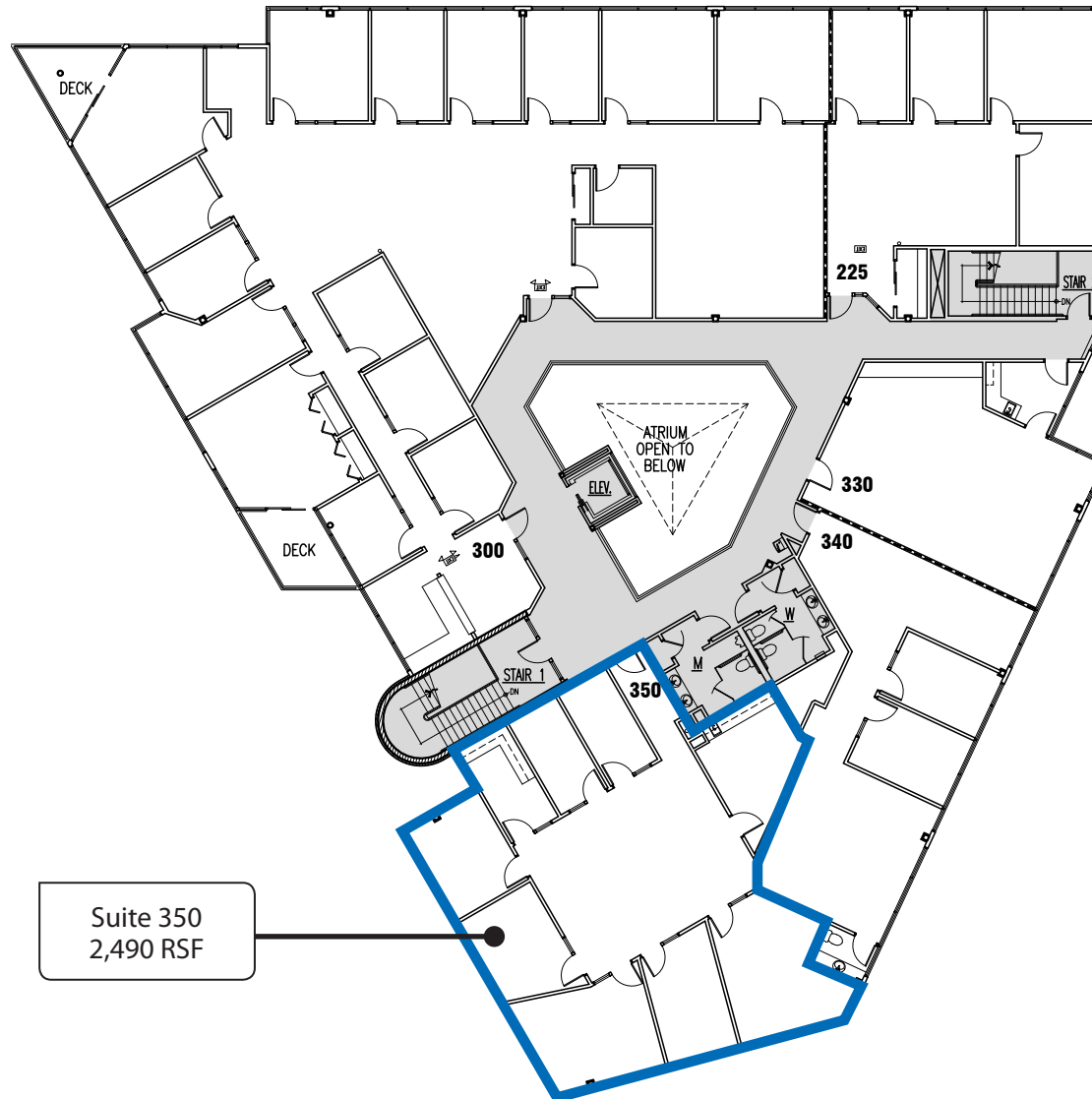
250 Bobwhite Court | Boise, Idaho 83706

SECOND FLOOR



This information was obtained from sources believed reliable but cannot be guaranteed. Any opinions or estimates are used for example only.

THIRD FLOOR



This information was obtained from sources believed reliable but cannot be guaranteed. Any opinions or estimates are used for example only.